

CONNECT WITH GREEN LEAD MOTOR

GREEN LEAD CORD

X SURFACE

BLACK LEAD MOTOR  
BLACK LEAD CORD  
WHITE LEAD MOTOR  
WHITE LEAD CORD

11 HANDLE  
11 ANTI SEIZE LUBRICANT  
11 ANTI SEIZE LUBRICANT

11 SWITCH BOX  
X SURFACE

4 CORD REPLACEMENT ASSEMBLY

10 2 SPEED SWITCH BOOT

8 OUTPUT ENDPLATE

9 OIL SEAL LIP TO FACE IN THIS DIRECTION

12 2 SPEED MOTOR

1 MOUNT

2 RETAINER

3 REPLACEMENT ASSEMBLY  
COVER  
WASHER  
5/16-18 SCREW  
ANTI SEIZE LUBRICANT

TO BE ASSEMBLED AFTER ASSEMBLING THE MOTOR TO THE PUMP

7 BRUSH AND BRUSH CAP (2 PLCS)

5 ARMATURE AND BEARING ASSEMBLY

6 BEARING AND SNAP RING (2 PLCS)

11 1/4-20 SCREW (2 PLCS)

11 ANTI SEIZE LUBRICANT

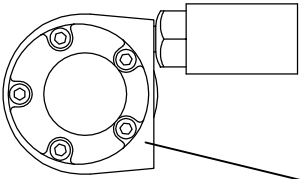
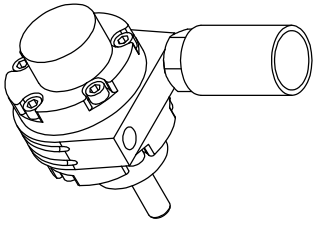
11 ANTI SEIZE LUBRICANT

11 10-24 SCREW (2 PLCS)

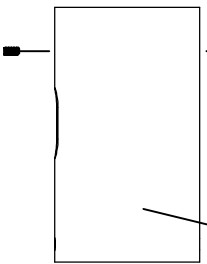
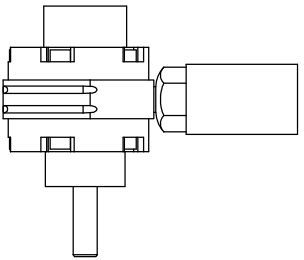
11 11

\*\*\* THESE COMPONENTS ARE INCLUDED WITH THE SWITCH BOX AND HANDLE REPLACEMENT ASSEMBLY

REV	EON	8	7	6	5	4	3	2	1
A	XXXX	NEW ISSUE			XX	X/XX/XX	CHK'D	PROJECT #	XXXX
<p>REVISION RECORD</p> <p>BY DATE</p> <p>THE INFORMATION CONTAINED IN THIS DOCUMENT IS THE PROPERTY OF GALVADAY PUMPS. REPRODUCTION IN WHOLE OR IN PART WITHOUT THE WRITTEN PERMISSION OF GALVADAY PUMPS IS PROHIBITED.</p> <p>PROPRIETARY AND CONFIDENTIAL</p> <p>UNLESS OTHERWISE SPECIFIED, DIMENSIONS ARE IN INCHES</p> <p>TOLERANCES: FRACTIONAL ±1/64" ANGULAR ±30° SURF. ±.005" TYP. HOLE ±.005" TYP.</p> <p>DATE STAMP</p> <p>DATE 4/13/16</p> <p>WWW.CURRENTAPPS.COM</p> <p>A DIVISION OF: CURRENT APPLICATIONS 275 BELLEVILLE AVENUE, SUITE H PHOENIX, AZ 85016-6699 FAX: (313) 789-4699</p> <p>TITLE: REPLACEMENT 2 SPEED MOTOR PARTS</p> <p>SIZE DWG. NO. 4060-036</p> <p>SCALE: 1:1 WEIGHT: SHEET 1 OF 3</p>									

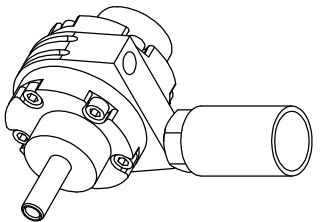


13 AIR MOTOR REPLACEMENT ASSEMBLY (EITHER 1/3 OR 1/2 HP)



1/4-20 SCREWS (2 PLACES)

14 AIR MOTOR MOUNT REPLACEMENT ASSEMBLY



REV	ECH	NEW ISSUE	BY	DATE	CHK'D	PROJECT #
A	XXXX	REVISION RECORD	XX	X/XX/XX		XXXX

PROPRIETARY AND CONFIDENTIAL.  
THE INFORMATION CONTAINED IN THIS DRAWING IS THE SOLE PROPERTY OF CURRENT APPLICATIONS, INC. REPRODUCTION IN PART OR AS A WHOLE WITHOUT THE WRITTEN PERMISSION OF CURRENT APPLICATIONS IS PROHIBITED.

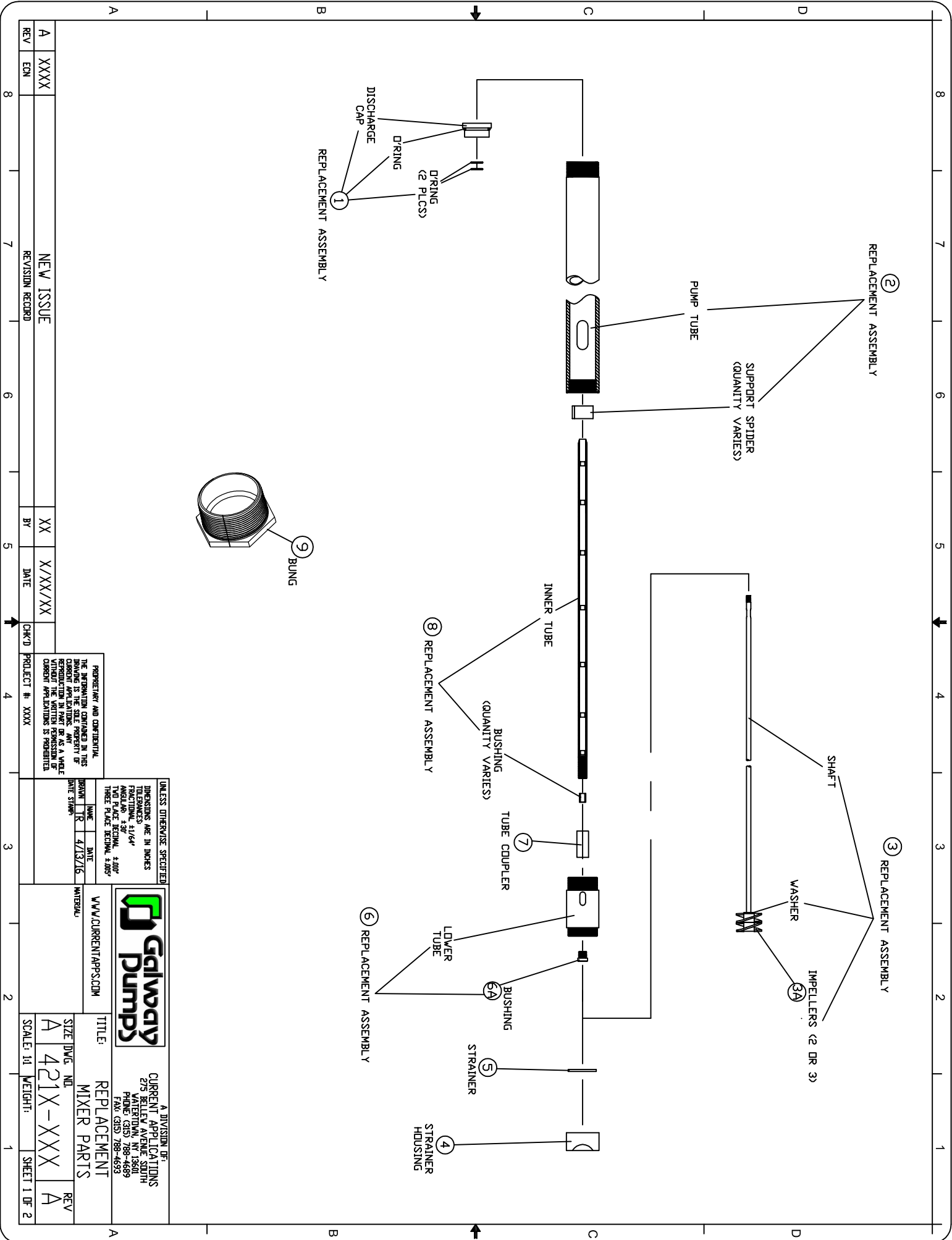
UNLESS OTHERWISE SPECIFIED  
DIMENSIONS ARE IN INCHES  
TOLERANCES: 31/64"  
FRACTIONS 31/64"  
TWO PLACE DECIMAL 3.00"  
THREE PLACE DECIMAL 3.000"

NAME	DATE
TR	4/13/16
DATE STAMP	



A DIVISION OF:  
CURRENT APPLICATIONS  
275 WILSON AVE. SUITE 200  
MILFORD, MA 01850  
PHONE: (978) 799-4699  
FAX: (978) 788-4693

WWW.CURRENTAPPS.COM		MATERIAL:	
TITLE: AIR MOTOR AND PARTS REPLACEMENT		SIZE DWG. NO.:	REV
SCALE: 1:1		4300-XXX	A
WEIGHT:		SHEET 2 OF 3	



REV	ECN	NEW ISSUE	BY	DATE	CHK'D	PROJECT #
A	XXXX	REVISION RECORD	XX	X/XX/XX		XXXX

PROPRIETARY AND CONFIDENTIAL  
 THE INFORMATION CONTAINED IN THIS DRAWING IS THE SOLE PROPERTY OF CURRENT APPLICATIONS. ANY REPRODUCTION IN PART OR AS A WHOLE WITHOUT THE WRITTEN PERMISSION OF CURRENT APPLICATIONS IS PROHIBITED.

UNLESS OTHERWISE SPECIFIED
DIMENSIONS ARE IN INCHES
TOLERANCES: ±1/64"
FRACTIONAL ±1/64"
WELD FILE ±0.001, ±.002"
THREE PLACE DECIMAL ±.005"

DATE	4/13/16
NAME	
TR	
DATE	
NAME	
TR	

WWW.CURRENTAPPS.COM	TITLE:	REPLACEMENT MIXER PARTS
SIZE DIVG. NO.	SCALE: 1:1	WEIGHT:
A 421X-XXX		
REV	SHEET 1 OF 2	
A		

**Galway Pumps**

A DIVISION OF  
 CURRENT APPLICATIONS  
 275 WESTERN AVENUE, SUITE 300  
 PHOENIX, AZ 85001  
 PHONE: (313) 788-6699  
 FAX: (313) 788-6693

KEY	PART NUMBER	REPLACEMENT DESCRIPTIONS	MATERIAL
1	1007-001	DISCHARGE CAP WITH O-RINGS (ASSEMBLY)	CPVC
1	1007-002	DISCHARGE CAP WITH O-RINGS (ASSEMBLY)	PVDF
1	1007-003	DISCHARGE CAP WITH O-RINGS (ASSEMBLY)	POLYPRD
1	1007-004	DISCHARGE CAP WITH O-RINGS (ASSEMBLY)	POLYPRD FOOD
2	1009-100	100 TUBE AND SUPPORT(S) (ASSEMBLY)	CPVC
2	1009-125	125 TUBE AND SUPPORT(S) (ASSEMBLY)	CPVC
2	1009-146	146 TUBE AND SUPPORT(S) (ASSEMBLY)	CPVC
2	1010-100	100 TUBE AND SUPPORT(S) (ASSEMBLY)	PVDF
2	1010-125	125 TUBE AND SUPPORT(S) (ASSEMBLY)	PVDF
2	1010-146	146 TUBE AND SUPPORT(S) (ASSEMBLY)	PVDF
3	8901-100	100CM SHAFT W/(2) IMPELLERS (ASSEMBLY)	ALLOY 20
3	8901-125	125CM SHAFT W/(2) IMPELLERS (ASSEMBLY)	ALLOY 20
3	8901-146	146CM SHAFT W/(2) IMPELLERS (ASSEMBLY)	ALLOY 20
3	8902-100	100CM SHAFT W/(2) IMPELLERS (ASSEMBLY)	HASTELLOY
3	8902-125	125CM SHAFT W/(2) IMPELLERS (ASSEMBLY)	HASTELLOY
3	8902-146	146CM SHAFT W/(2) IMPELLERS (ASSEMBLY)	HASTELLOY
3	8903-100	100CM SHAFT W/(2) IMPELLERS (ASSEMBLY)	316SS
3	8903-125	125CM SHAFT W/(2) IMPELLERS (ASSEMBLY)	316SS
3	8903-146	146CM SHAFT W/(2) IMPELLERS (ASSEMBLY)	316SS
3	8904-100	100CM SHAFT W/(3) IMPELLERS (ASSEMBLY)	316SS
3	8904-125	125CM SHAFT W/(3) IMPELLERS (ASSEMBLY)	316SS
3	8904-146	146CM SHAFT W/(3) IMPELLERS (ASSEMBLY)	316SS
3A	1009-029	IMPELLERS (SET OF 2)	
4	1009-019	STRAINER HOUSING	
5	1009-020	STRAINER STAINLESS STEEL	316SS
5A	1009-035	STRAINER TEFLON	TEFLON
6	1008-001	LOWER TUBE W/ BUSHING (ASSEMBLY)	FOOD GRADE
6	1008-002	LOWER TUBE W/ BUSHING (ASSEMBLY)	FOOD GRADE
6A	1009-017	LOWER BUSHING	FOOD GRADE
6A	1009-018	LOWER BUSHING	CPVC
7	1009-014	TUBE COUPLER	PVDF
7	1009-015	TUBE COUPLER	POLYPRD
7	1009-016	TUBE COUPLER	POLYPRD

KEY	PART NUMBER	REPLACEMENT DESCRIPTION	MATERIAL
8	1005-100	100CM INNER TUBE W/ BUSHING (7) (ASSEMBLY)	
8	1005-125	125CM INNER TUBE W/ BUSHING (9) (ASSEMBLY)	
8	1005-146	146CM INNER TUBE W/ BUSHING (10) (ASSEMBLY)	
8	1006-100	100CM INNER TUBE W/ BUSHING (7) (ASSEMBLY)	FOOD GRADE
8	1006-125	125CM INNER TUBE W/ BUSHING (9) (ASSEMBLY)	FOOD GRADE
8	1006-146	146CM INNER TUBE W/ BUSHING (10) (ASSEMBLY)	FOOD GRADE
9	1009-027	VAPOR SEAL BUNG	POLYPRD
9	1009-028	VAPOR SEAL BUNG	316SS

A XXXX  
 EN REVISION RECORD  
 NEW ISSUE  
 XX BY  
 X/XX/XX DATE

CHK'D PROJECT # XXXX  
 PROPRIETARY AND CONFIDENTIAL  
 THE INFORMATION CONTAINED IN THIS DRAWING IS THE SOLE PROPERTY OF GALWAY DUMPS AND IS TO BE USED ONLY FOR THE CURRENT APPLICATION. REUSE OR MODIFICATION WITHOUT THE WRITTEN PERMISSION OF GALWAY DUMPS IS PROHIBITED.

UNLESS OTHERWISE SPECIFIED

DIMENSIONS ARE IN INCHES  
 FRACTIONS 1/16"  
 ANGULAR ±.01°  
 TYPED PLACE DECIMAL ±.005"  
 THREE PLACE DECIMAL ±.005"  
 DATE SHOWN

DRAWN: [ ]  
 NAME: [ ]  
 DATE: 4/13/16

MATERIAL: VVV/CURRENTAPPS.COM  
 TITLE: REPLACEMENT MIXER PARTS  
 SIZE DWG. NO. A 420X-XXX  
 SCALE: 1:1 WEIGHT: [ ]  
 REV A

A DIVISION OF  
 CURRENT APPLICATIONS  
 275 BELLEVUE AVENUE SOUTH  
 VALERDUN, NY 13601  
 PHONE: (315) 788-4689  
 FAX: (315) 788-4693

