



A DIVISION OF:

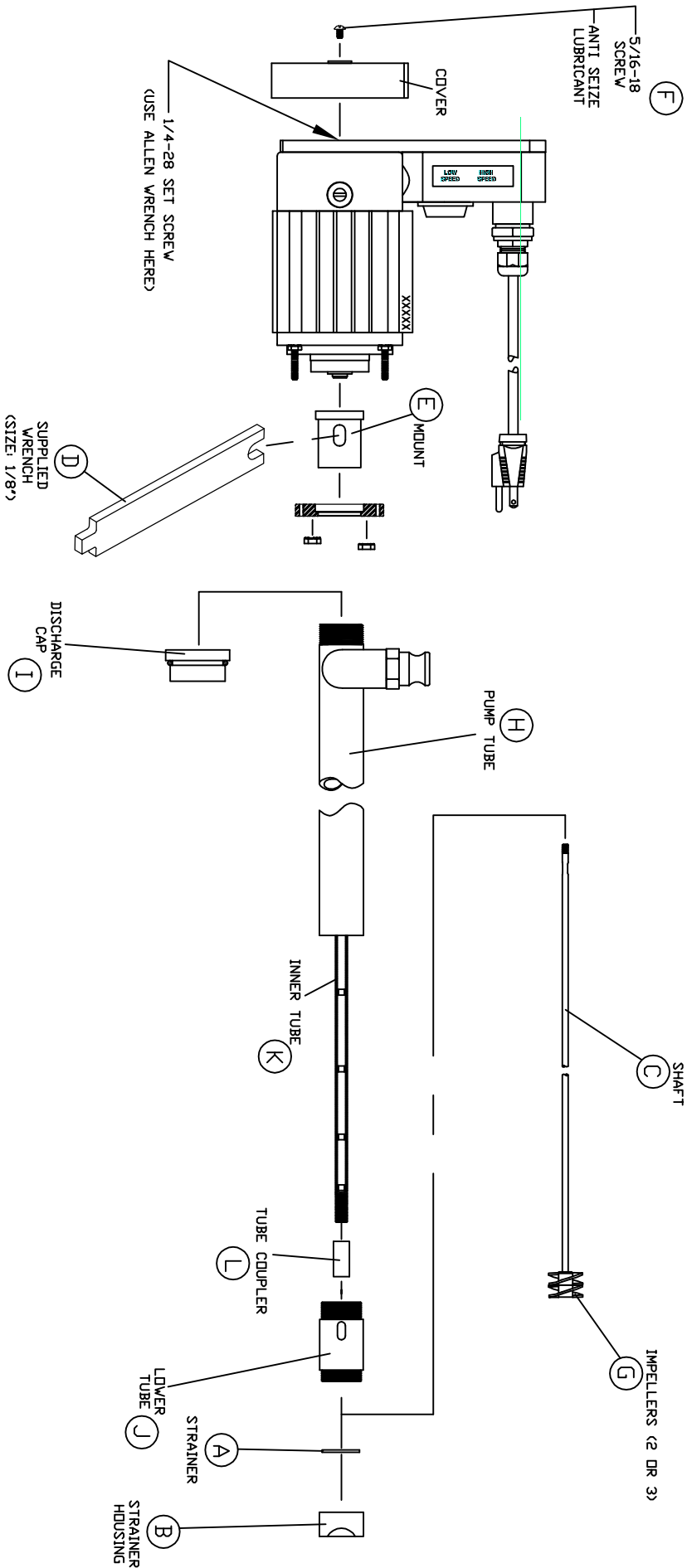


PO Box 321 275 Bellew Avenue South Watertown, NY 13601
Phone: 315-788-4689 Fax: 315-788-4693
E-mail: roger@currentapps.com

“400” Series Pump Disassembly Procedure

1. If pump has a strainer (A), remove the strainer housing (B) on the bottom of the pump (Left hand thread).
2. Unthread the pump shaft (C) from the motor shaft:
 - a.) Place shaft wrench (Supplied)(D) on the pump shaft (C) through the dis-assembly slot in the motor mount (E).
 - b.) Remove motor cover screw (F) and use Allen Wrench (size: 1/8”) to unthread the motor shaft from the pump shaft.
 - c.) Pull the impellers (G) and pump shaft (C) out of the pump, being careful not to bend the pump shaft.
3. Unthread the pump tube (H) from the motor mount (E) (Left Hand Thread).
4. To disassemble the pump tube:
 - a.) Remove the discharge cap (I) from the pump tube (H).
 - b.) Unthread the lower tube (J) from the pump tube (H) (Left hand thread)
 - c.) Remove the lower tube (J) and inner tube (K) from the pump tube (H).
 - d.) Unthread the inner tube (K) from the tube coupler (L) and lower tube (J).
5. Reassemble in reverse order.

Reference: 400 SERIES PUMP DISASSEMBLY PRINT



REV	ECN	NEW ISSUE	REVISION RECORD	BY	DATE	CHK'D	PROJECT #
A	XXXX			XX	7/15/16		XXXX

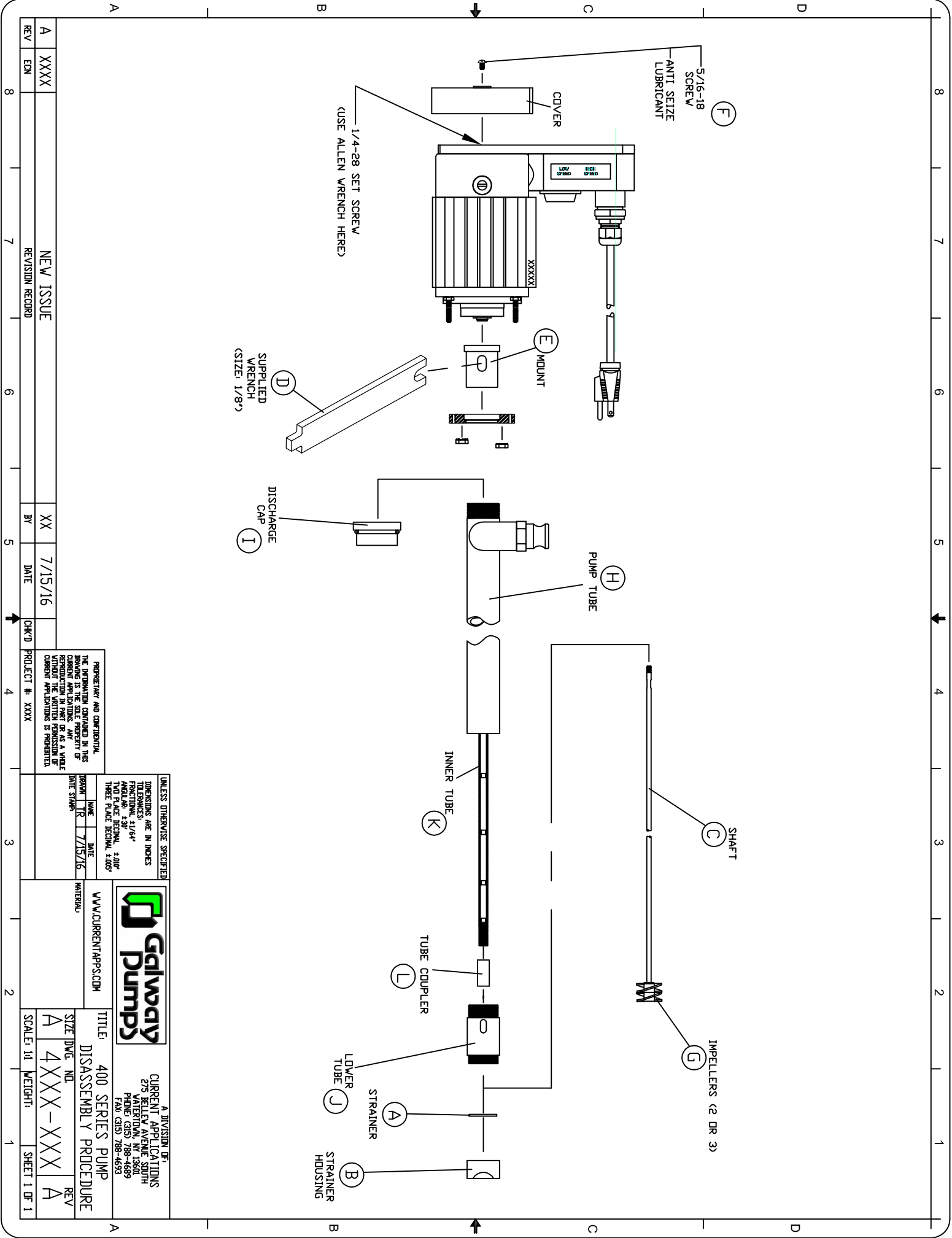
PROPERTY AND CONFIDENTIAL. THE INFORMATION CONTAINED IN THIS DRAWING IS THE SOLE PROPERTY OF CURRENT APPLICATIONS. ANY REPRODUCTION IN PART OR AS A WHOLE WITHOUT THE WRITTEN PERMISSION OF CURRENT APPLICATIONS IS PROHIBITED.

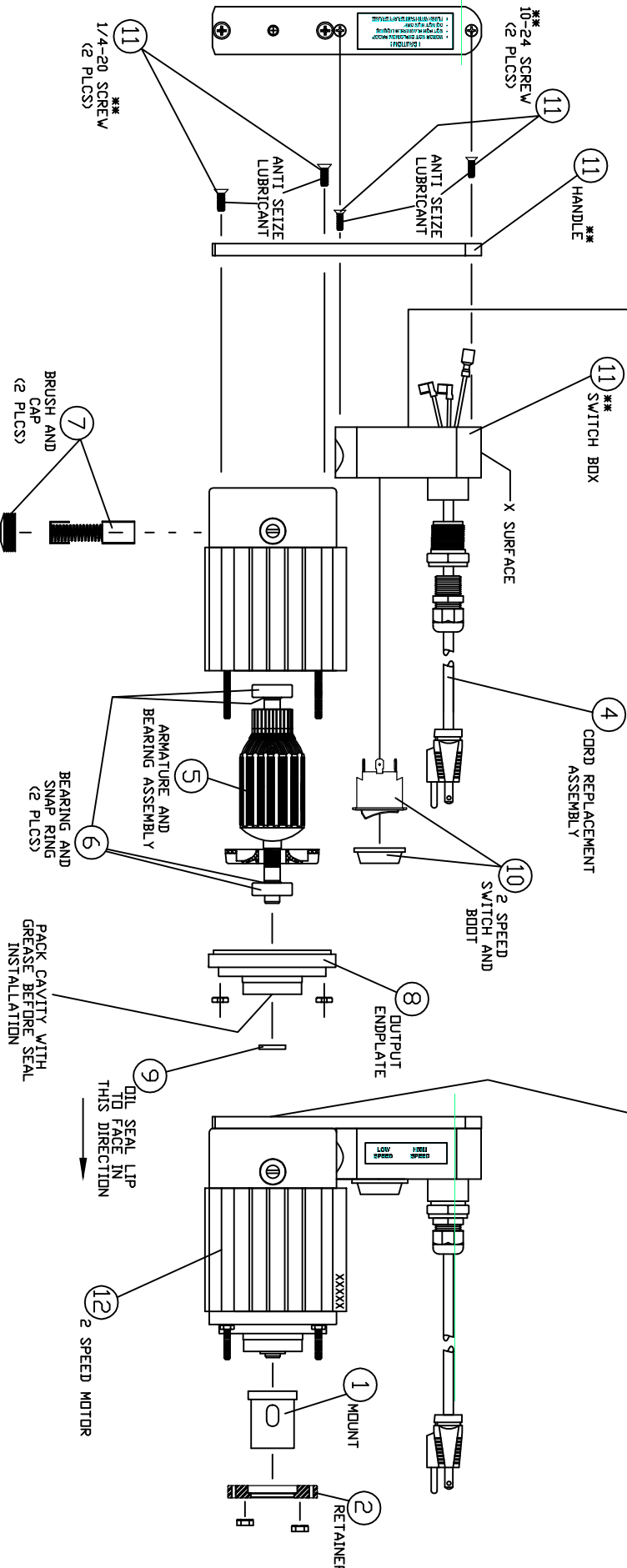
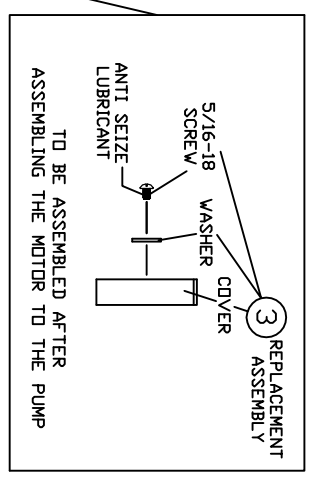
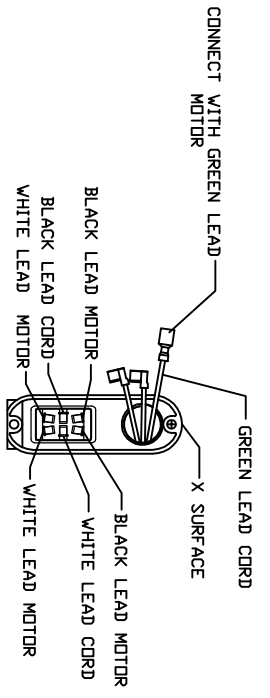
UNLESS OTHERWISE SPECIFIED	DATE	DATE
DIMENSIONS ARE IN INCHES	7/15/16	7/15/16
TOLERANCES: ±.005		
FRACTIONS: 1/16"		
DECIMALS: .005"		
THREE PLACE DECIMAL: ±.005"		



Galvway Pumps
 A DIVISION OF:
 CURRENT APPLICATIONS
 275 BELLEVUE AVENUE SOUTH
 VALERTOWN, NJ 08601
 PHONE: (352) 788-4689
 FAX: (352) 788-4693

WWW.CURRENTAPPS.COM	TITLE:	400 SERIES PUMP
	DISASSEMBLY PROCEDURE	
SCALE: 1:1	WEIGHT:	





*** THESE COMPONENTS ARE INCLUDED WITH THE SWITCH BOX AND HANDLE REPLACEMENT ASSEMBLY.

REV	EON	NEW ISSUE	XX	X/XX/XX	CHK'D	PROJECT #	XXXX
A	XXXX	NEW ISSUE	XX	X/XX/XX	CHK'D	PROJECT #	XXXX

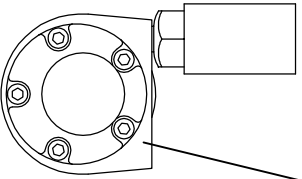
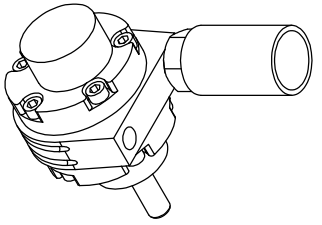
PROPRIETARY AND CONFIDENTIAL. THE INFORMATION CONTAINED IN THIS DOCUMENT IS UNCLASSIFIED EXCEPT WHERE SHOWN OTHERWISE. ANY REPRODUCTION IN PART OR AS A WHOLE WITHOUT THE WRITTEN PERMISSION OF CURRENT APPLICATIONS IS PROHIBITED.

UNLESS OTHERWISE SPECIFIED	ALL DIMENSIONS ARE IN INCHES
TOLERANCES:	FRACTIONAL ±1/64"
DECIMAL ±.005"	ANGLES ±.5°
THREADS PER INCH	3.005"
DATE	4/13/16
DRW	TR
NAME	DATE

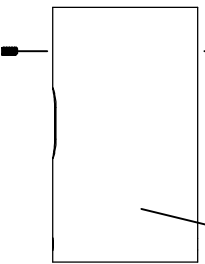
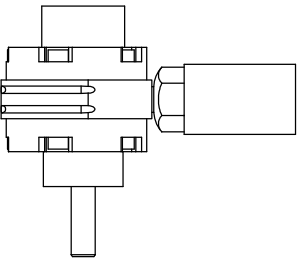


A DIVISION OF
 CURRENT APPLICATIONS
 275 BELLEVUE AVENUE, SUITE 300H
 PHOENIX, AZ 85016
 PHONE: (313) 788-4699
 FAX: (313) 788-4693

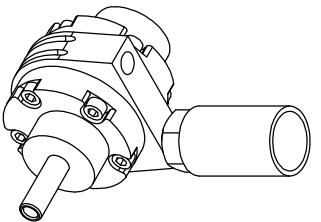
WWW.CURRENTAPPS.COM	TITLE: REPLACEMENT
MATERIAL:	2 SPEED MOTOR PARTS
SIZE DWG. NO. A	4060-036
SCALE: 1:1	WEIGHT:
SHEET 1 OF 3	REV A



13 AIR MOTOR REPLACEMENT ASSEMBLY (EITHER 1/3 OR 1/2 HP)



14 AIR MOTOR MOUNT REPLACEMENT ASSEMBLY
1/4-20 SCREWS (2 PLACES)



REV	ECH	NEW ISSUE	BY	DATE	CHK'D	PROJECT #
A	XXXX	REVISION RECORD	XX	X/XX/XX		XXXX

PROPRIETARY AND CONFIDENTIAL.
THE INFORMATION CONTAINED IN THIS DRAWING IS THE SOLE PROPERTY OF CURRENT APPLICATIONS, INC.
REPRODUCTION IN PART OR AS A WHOLE WITHOUT THE WRITTEN PERMISSION OF CURRENT APPLICATIONS IS PROHIBITED.

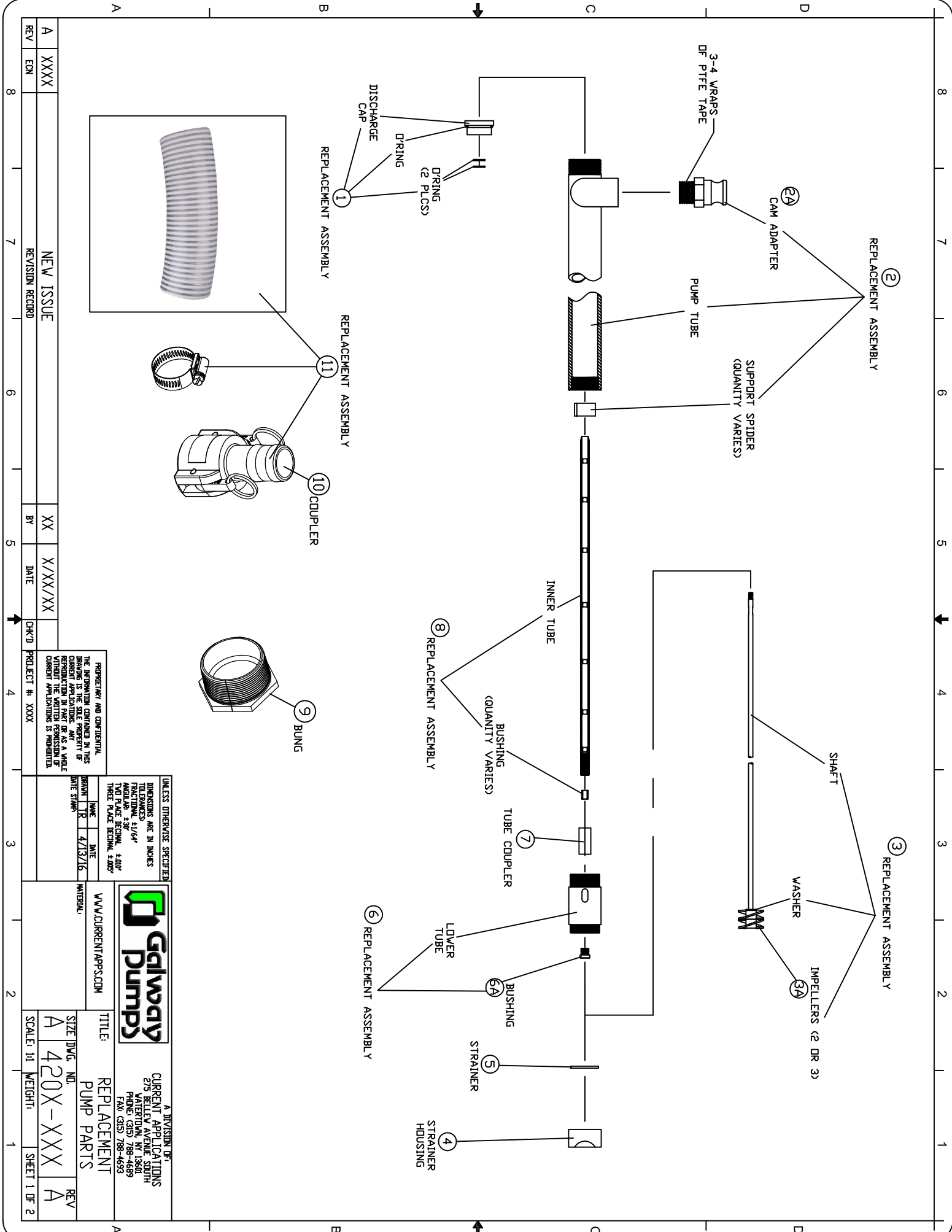
UNLESS OTHERWISE SPECIFIED
DIMENSIONS ARE IN INCHES
FRACTIONS 3/16"
TWO PLACE DECIMAL 3.00"
THREE PLACE DECIMAL 3.000"

NAME	DATE
TR	4/13/16
DATE STAMP	



A DIVISION OF:
CURRENT APPLICATIONS
275 WILSON AVE. SOUTH
MILFORD, MA 01860
PHONE: (951) 799-4699
FAX: (951) 788-4693

WWW.CURRENTAPPS.COM		TITLE: AIR MOTOR AND PARTS REPLACEMENT	
SIZE	DWG. NO.	REV	WEIGHT
A	4300-XXX	A	
SCALE: 1:1		SHEET 2 OF 3	



REV	ECN	NEW ISSUE	REVISION RECORD
A	XXXX		

BY	DATE	CHK'D	PROJECT #
XX	X/XX/XX		XXXX

PROPERTY AND CONFIDENTIAL
 THE INFORMATION CONTAINED IN THIS DRAWING IS THE PROPERTY OF CURRENT APPLICATIONS. ANY REPRODUCTION IN PART OR AS A WHOLE WITHOUT THE WRITTEN PERMISSION OF CURRENT APPLICATIONS IS PROHIBITED.

UNLESS OTHERWISE SPECIFIED	
DIMENSIONS ARE IN INCHES	
TOLERANCES	
FRACTIONAL ±1/64"	
DECIMAL ±.005	
ANGULAR ±.001	
THREAD PLACE DECIMAL ±.005"	

Galvaway Pumps

A DIVISION OF
 CURRENT APPLICATIONS
 275 WESTERN AVENUE, SUITE 300
 PHOENIX, AZ 85001
 PHONE: (313) 788-4699
 FAX: (313) 788-4693

WWW.CURRENTAPPS.COM

TITLE: REPLACEMENT PUMP PARTS

SCALE: 1:1 WEIGHT: SHEET 1 OF 2

KEY	PART NUMBER	2 SPEED DRIVE MOTOR REPLACEMENT DESCRIPTIONS	
1	1009-002	ELECTRIC MOTOR MOUNT	
2	1009-003	ELECTRIC MOTOR RETAINER	
3	1009-004	ELECTRIC MOTOR COVER WITH WASHER AND SCREW	
4	1009-006	CORD W/STRAIN RELIEF, REDUCER AND TERMINALS	
5	1009-007	ARMATURE AND BEARING ASSEMBLY	
6	1009-008	ARMATURE BEARINGS AND SNAP RINGS (2 EACH)	
7	1009-009	MOTOR BRUSH AND CAP (2 EACH)	
8	1009-010	OUTPUT END PLATE	
9	1009-011	OUTPUT OIL SEAL (SEE PRINT FOR INFO)	
10	1009-012	TWO SPEED SWITCH WITH BOOT	
11	1009-013	SWITCH BOX AND HANDLE ASSEMBLY	
12	1100-001	ELECTRIC MOTOR 2 SPEED WITHOUT MOUNT ASSEMBLY	

KEY	PART NUMBER	OTHER DRIVE MOTORS REPLACEMENT DESCRIPTIONS	MATERIAL
13	1100-002	1/3HP AIR MOTOR	
13	1100-003	1/2HP AIR MOTOR	
14	1009-005	AIR MOTOR MOUNT	CPVC
	1009-001	ONE SPEED SWITCH WITH BOOT	
	1009-034	VARIABLE AC SPEED CONTROL	

REV	EDN	REVISION RECORD	BY	DATE	CHK'D	PROJECT #
A	XXXX	NEW ISSUE	XX	X/XX/XX		XXXX

PROPRIETARY AND CONFIDENTIAL
 THE INFORMATION CONTAINED IN THIS DRAWING IS THE SOLE PROPERTY OF CURRENT APPLICATIONS AND IS TO BE USED FOR THE PROJECT AND SITE SPECIFICALLY IDENTIFIED HEREIN. WITHOUT THE WRITTEN PERMISSION OF CURRENT APPLICATIONS IS PROHIBITED.

UNLESS OTHERWISE SPECIFIED
 DIMENSIONS ARE IN INCHES
 FRACTIONS 1/64"
 ANGULAR ±.01°
 TYP PLACE DECIMAL ±.005"
 THREE PLACE DECIMAL ±.005"
 HOLE DRILL ±.005"
 HOLE REAM ±.005"
 DATE STAMP



A DIVISION OF:
 CURRENT APPLICATIONS
 275 BELLEVUE AVENUE SOUTH
 WATERLOO, NY 13601
 PHONE: (315) 788-4689
 FAX: (315) 788-4693

WWW.CURRENTAPPS.COM

MATERIAL:

TITLE: REPLACEMENT MOTOR PARTS

SCALE: 1:1 WEIGHT: SHEET 2 OF 3

REV A